

MOOR VIEW GOLF CENTRE



Conferences and Meetings

Allowing participants to escape from their hectic schedules.

New product launches, presentations, training courses, corporate entertaining and team building exercises.

Meetings whether hosting for your own team or important clients our conference facilities are fully flexible to suit your needs.

Room Includes:

- 80 delegates
- Fully air conditioned
- Ample car parking spaces
- Separate entrance and amenities
- Wheel chair access
- Wireless high speed broadband
- Tv and projector available with USB & HDMI ports
- Natural light and blinds
- White Board

PACKAGES

Room Hire only

Half Day (up to 4 hours) £100

Full Day £150

Breakfast Package

£6.50 per delegate

Buffet style Bacon/Sausage Sandwiches

(Vegetarian options available)

Tea and Coffee

Biscuits

Orange Juice or bottled water

Lunch package

£10.50 per delegate

Selection of Sandwiches

Quiche, Handcut chips, Salad & Creamy coleslaw

Tea and Coffee with biscuits

Bottled water each

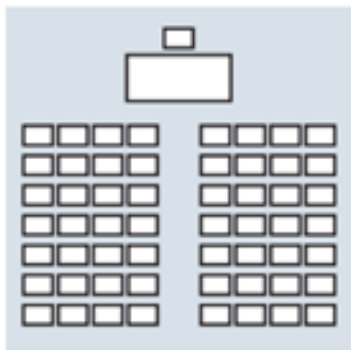
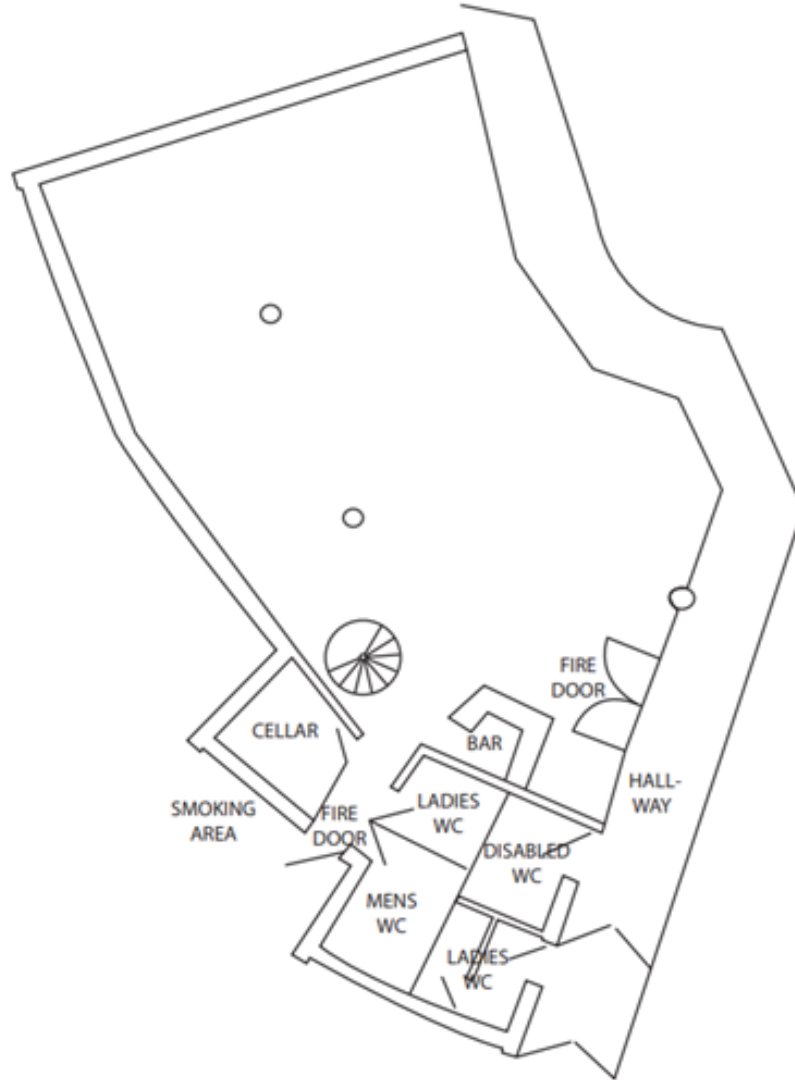
Golf driving range can be incorporated into packages.

Bespoke packages can be arranged please email our Events

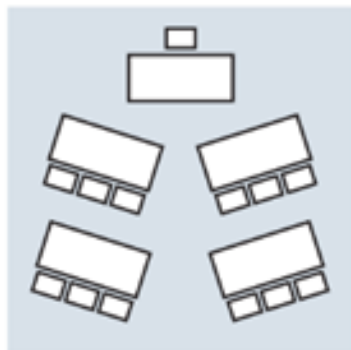
Manager on moorviewgolfcentre@outlook.com

for more details.

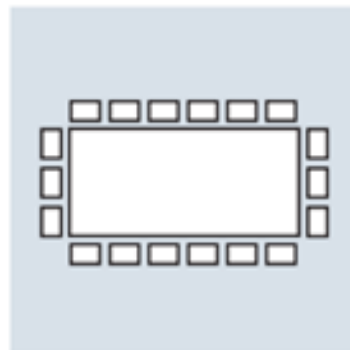
Floor plan



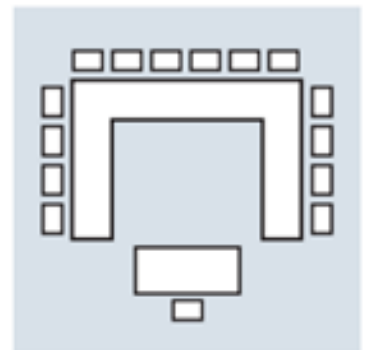
Theatre



Classroom



Boardroom



U-shaped

Find us

Based in Bradway, Sheffield near to Meadowhead.
Located on the outskirts of Sheffield based in Bradway
just off Meadowhead roundabout.
Not far from Dronfield and Chesterfield.
76 bus stops outside our facility.



Moorview Golf Centre - Google Maps







CONTACT US

Don't hesitate to get
in touch if you'd like to know more or arrange a viewing.

Moorview Golf Centre
Bradway Road
Sheffield
S17 4QU

Phone: 0114 2361195

www.moorviewgolfcentre-sheffield.co.uk

www.facebook.com/moorviewgolfcentre

Call Lauren

on 07881646872

Email: moorviewgolfcentre@outlook.com

We look forward to welcoming
you soon.